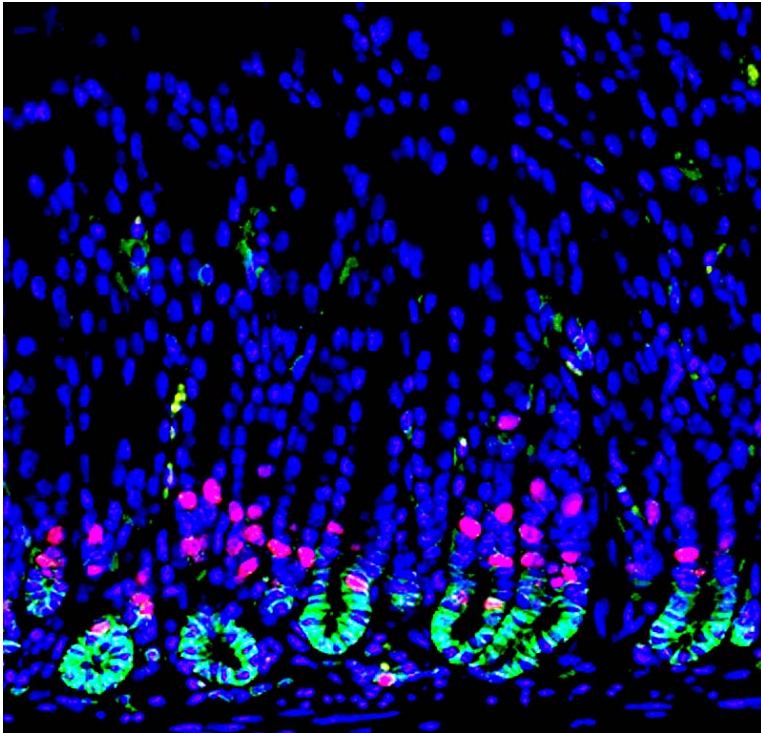


VTBMS/TOX 7010

Fall 2016

Mouse and Stem Cell Pathology



If interested, contact Alex Nikitin (an58)

- principles and methods of pathology
- systematic evaluation of new genetically modified mice
- pathology role in stem cell research and regenerative medicine

One credit. Maximum enrollment 12 students. Graduate students, post-docs, and interns. The course meets during the second half of the semester starting October 17 and relies on the background information from NS/BIOGD 4900 Manipulating the Mouse Genome which meets during the first half. Students interested in both courses must register for them separately. Prerequisites: Permission by instructor. Recommended: Basic course in histology (BIOAP 4130 or equivalent). Lec, M, 1:25-2:20; lab/lec, M, lab 2:30-4:25 or lec 2:30-3:25.